

# Kaipupu Point

Sounds Wildlife Sanctuary

ANNUAL REPORT 2015/16



A PROJECT FOR THE COMMUNITY BY THE COMMUNITY



# TABLE OF CONTENTS

Chairperson's Report	3
Highlights 2015/16	6
Our Committee	7
Our Mission Statement	8
Strategic Goals	8
Biodiversity	9
Pest Management	10
Education	11
Maintenance & Development	12
Marketing & Promotion	13
Finance & Administration	14
Relationships & Partnerships	15
Thank you to our supporters	16
Appendix 1: Financial Statements	



# CHAIRPERSON'S REPORT

Achieving success, or even gaining parity in the volunteer based, not for profit sector, over the past five years in New Zealand, has certainly not been easy. This is certainly not an environment for the faint hearted!

Global financial crises, significant reduction in gaming trust grants, downsizing and restructuring of government agencies (such as Department of Conservation) and endlessly recruiting active volunteers in an aging local population, all impact on an organisation such as ours.

So it gives me great pleasure and satisfaction to report on another stellar year for and by our Kaipupu community.

- Two highly successful and most exciting species translocations, and plans for more
- Pest monitoring and capture maintained to the very highest level by a dedicated team
- A highly successful appointment of our new Kaipupu coordinator, Rachel Russell
- A successful move to our new information centre in Mariners mall
- A stable financial position at years end
- The successful completion of our guided tours concession process, with an opportunity now to maximise this
- An increase in membership



- Active engagement of all the local schools
- Maintenance of the track and amenities to the highest order
- An excellent relationship forged with the Mens Shed, through Nozz Fletcher
- Good support for our fundraising initiatives and regular lecture series
- The continuing tangible support of our major sponsors, Bluebridge, NZ King Salmon, and Mud house wines NZ

An impressive list of achievements by any measure.

Our countries battle to restore the depleted flora and fauna in pockets of our diverse New Zealand landscape is growing momentum. It is therefore especially pleasing to note that several groups doing similar work elsewhere, have engaged with us during the year, keen to share and learn from us and we welcome that. Our smallish size and assessable location, make us the ideal 'controlled experiment' and the interest in what we offer, and how we do things attracts plenty of interest. That of course highlights our need to continue our good work unabated, attracting new volunteers, using the best available technology (especially in pest management), learning from

*continued over page...*

## CHAIRPERSON'S REPORT

others and setting ambitious and stretching targets. In that regard, I can't help but think that further and more meaningful collaboration with other similar groups is the next priority along the Kaipupu journey. The prospect of a local 'hub' of conservation groups is already gathering momentum in Picton. Close to home, that obviously includes the newly established Picton Dawn Chorus group, started up by our own James Wilson. The work of this group can only have positive spin offs for Kaipupu and we will support them and work alongside them, in any way we can. We will obviously have a lot of 'shared members'.

Inevitably, to survive and to protect what we have established, to lock in the gains we have made over the past 10 years and to continue to contract coordinators, we need to secure ongoing funding.

The fundraising 'wine and food' dinner initiated by King Salmon and supported by Chrissy Powlesland and Mud House Wine was obviously a major success for us this year.

I also want to acknowledge our most active volunteers. The pest monitoring group deserves our highest praise for their unstinting efforts. They generally hold a low profile, are usually



not the ones interested in attending AGMs, and are more comfortable walking the tracks, and setting, recording and reporting. We say a huge thank you to you all and hope the species translocations are a just reward for your hours of work.

Alan Izard is not a formal member of our committee...by his own choosing, but continues to work tirelessly with his small band of merry men, to attend to all our maintenance and development needs. Quality work is their hall mark, but the need for some younger people to contribute in this regard, is obviously needed to sustain this vital work.

I thank our committee. Chairing this group has been an absolute pleasure. They are a most competent, engaged and contributing group, and I thank them all most sincerely.

This year we farewelled Jenny Keene, our long time coordinator. Jenny did a wonderful job for five years in her creative and skilled manner, and her work in keeping the grant money coming in was of vital importance to us. Jenny is now living a very different life in the Fiji islands and we had the pleasure of farewelling her and Rob at a recent function.

*continued over page...*



# CHAIRPERSON'S REPORT

Her replacement Rachel Russell has settled to task incredibly well, bringing a new range of skills and initiatives into the mix. Her work based at the information centre has really raised our profile, accessibility and community engagement. Our other contracted worker Trudy Nicholas, continues to provide the motivation and encouragement to keep our trapping volunteers organised and focussed on the task at hand. We are very fortunate to have Rachel and Trudy on board. Together these two have steered our obligatory health and safety plans through to a common sense, complying position and the rest of us should be extremely grateful that have navigated this minefield so skillfully.

Robin Cox has been with us from the start of the Kaipupu journey, 11 years ago....an incredible source of wisdom and support. I am delighted to report that although his amazing lifetime career at DOC has ended, he has agreed to stay on the committee going forward. That says a lot about his genuine passion for our work. The availability and support of Rose Prenderville and Robin Cox ensure the link with our foundation partners is robust and aligned.

Knowing there are so many good people engaged with Kaipupu gives me full confidence in the organisation going forward. 2015/16 was another very good year of progress. We are making a difference. The recognition that we are worthy of 'crèche status' for kiwi is a special achievement. So we must push on in the genuine belief that we are making an enduring difference to our part of the ecosystem. Thank you to you all for being a part of that.



Barry Maister



"A SAFE HAVEN FOR NATIVE WILDLIFE  
AND THE CLOSEST WILDLIFE SANCTUARY  
TO PICTON"



# HIGHLIGHTS 2015/16

We have celebrated many achievements throughout the year and across all aspects of the Sanctuary.

## HIGHLIGHTS INCLUDE:

### *Celebrating 10 years*

- In March 2015, we celebrated 10 years since the inception of the Sanctuary.
- 150 people including members, volunteers and sponsors attended celebrations on the Sanctuary

### *Cawthorn Marlborough Environment Awards*

- Kaipupu Point Sounds Wildlife Sanctuary won in the "Landscape and Habitat Enhancement" section
- The judges concluded that "The Kaipupu Point project connects very well with the community on all levels and has excellent communication and on-going support"

### *Gibbs charity lunch*

- A joint fundraiser with Gibbs on Godfrey (now Arbour) and Ōra King raised \$24,000 for the Sanctuary
- The event included a silent auction and a live auction of a drawing by Don Binney, Kaipupu I, which raised \$8,100

### *South Island Robin translocation*

- In March 2016, we celebrated our first translocation with the successful transfer of 24 South Island Robin
- Over 100 volunteers, members, sponsors and media attended this event with coverage on Seven Sharp and local newspapers

### *Rowi kiwi creche*

- We officially became a rowi kiwi creche site, nine rowi were transferred to the Sanctuary
- A blessing was held at Waikawa marae
- As part of Operation Nest Egg, the kiwi will be transferred back to Okarito forest in spring



### ***Cawthorn Marlborough Environment Awards 2015***

Winner of Landscape and Habitat Enhancement Award

#### ***Left to Right:***

Donna & Grant Robertson (Morgans Rd Nursery), Jenny Keene, Peter Hamill, Barry Maister, Rob Parker, Dido & Gerald Harper

# OUR COMMITTEE

## BARRY MAISTER

### CHAIRPERSON

Barry loves nothing better than getting out to the Sanctuary to share his knowledge and experiences. This is his third year as chairperson.



## PETER HAMILL

### DEPUTY CHAIRPERSON

Pete became a Committee member in 2013 and has a lead role in the area of biodiversity. Pete led the South Island robin and kiwi translocations this year.



## CHRISSEY POWLESLAND

### MARKETING

Chrissy has been a passionate Picton resident since 2013 and brings over 20 years of marketing experience to the Committee.



## NICKY JENKINS

### SECRETARY

A member, life member, sometime guide and volunteer wherever help is needed; on the Sanctuary, in the shop, or around town. Nicky worked with the Committee to develop the comprehensive admin and communication systems now in place.



## JAMES WILSON

### PEST MONITORING

20 years farming in NZ and overseas, 20 years in business start ups mostly involving IT, 15 years of successful predator eradication in Marlborough Sounds. Now living in Picton.



## MELISSA KELLIE

### FINANCE

Mel and her partner Phil moved to Picton from Auckland in 2010 after spending just a day here! As well as helping run their Waikawa accommodation business Mel also does contract accounting work for various companies in Marlborough. They both love the Picton lifestyle and the amazing natural environment (and lack of traffic jams!).



## ANDREW JOHN

### EDUCATION

A trained teacher, Andrew works with schools to help children develop a long term interest in conservation of New Zealand's special species.



## GERALD HARPER

### MAINTENANCE

Gerald has been around Kaipupu since its inception in 2005, he is involved with maintenance and pest monitoring.



## ROSE PRENDEVILLE

### PORT MARLBOROUGH

Rose has been involved with Kaipupu Point since the idea of the Sanctuary was first mooted, and has been Port Marlborough's representative on the Committee for most of this time.



## ALAN IZARD

### MAINTENANCE

Past chairman Alan is a regular at the Sanctuary with a chainsaw or some form of tool in hand. He has been involved with the Sanctuary since 2007.



## ROBIN COX

Involved with the Sanctuary since it's inception in 2005, Robin was the Department of Conservation representative on the Committee until his retirement in mid 2016.



# OUR MISSION STATEMENT

To enrich the community through the restoration and guardianship of an indigenous Marlborough Sounds wildlife sanctuary, in which the natural ecosystems, native flora and fauna flourish in a predator free environment that can be appreciated by all.



# STRATEGIC GOALS

**Biodiversity** To develop a self-sustaining ecosystem by removing pests, recreating natural habitats, reintroducing appropriate species and allowing the natural regeneration of a coastal forest ecosystem, representative of the one there prior to human arrival.

---

**Education** To involve the whole community (preschool to adult) in a hands-on ever improving conservation experience. This will increase community understanding of conservation, within a framework of science and research. Kaipupu Sanctuary will enhance with nature and lift the competency of the public's conservation skills.

---

**Maintenance & Development** To ensure Kaipupu Sanctuary continues to develop and function in a controlled, ecologically sound, safe manner, maximising the visitor experience.

---

**Marketing & Promotion** To ensure Kaipupu Sanctuary captures the hearts and minds of the local community while gaining the financial and volunteer assistance required to meet its ecological and educational aims.

---

**Finance & Administration** To ensure Kaipupu Sanctuary is managed effectively and efficiently, that enquiries are promptly dealt with, that our finances are well managed and are compliant with statutory requirements. All records, minutes, agreements and database should be well maintained and accessible.





# BIODIVERSITY

What a year this has been for the biodiversity of Kaipupu Point and it is really heart-warming to see that was once just a dream, come to fruition.

## SOUTH ISLAND ROBIN

On 1st March 2016, the first of our official translocations took place with the release of South Island Robin to the sanctuary. Under the expert guidance of Bill Cash, a team of volunteers and Department of Conservation (DOC) staff travelled out to Long Island in the Marlborough Sounds early in the morning and spent the day coercing unsuspecting South Island Robins into the drop nets with the tempting treat of a meal worm or two. A total of 24 birds were caught, captured and banded and loaded into the transportation boxes ready for their journey to Kaipupu Point. They were greeted and released into the sanctuary by a very enthusiastic group of volunteers and supporters after moving welcome from representatives of Te Atiawa.

## ROWI KIWI CRECHE

The next official release was of Rowi Kiwi from Okarito. After multiple discussions with DOC, Te Atiawa and Makaawhio, an agreement was finalised to allow Kaipupu Point Sounds Wildlife Sanctuary to become a crèche for the juvenile birds. The kiwi begin their journey to Kaipupu as eggs gathered from the wild in the Okarito Forest and artificially incubated. After hatching they are taken to Willowbank Wildlife Reserve and raised for a few months until they are large enough to be released onto Kaipupu Point. They will stay in the sanctuary for six months or so until they are big enough to fend for themselves when they are released back into the forests of Okarito. Each year the sanctuary will act as a crèche for another batch of young kiwi and hopefully in a



few years we will all see some kiwi chicks that are descendants of the nine rowi kiwi that are living in the sanctuary now.

We have also had some new guests within the sanctuary that have introduced themselves. Little penguins and New Zealand falcon have made the sanctuary home. Over the next year we are also looking at introducing some additional species that would have once called Kaipupu home. Keep an eye on our website throughout the year for more information on species that are approved for release.

## 2016/17 ANNUAL WORK PLAN

- Plan for next translocations (Saddleback, Kakariki)
- Prepare weta boxes and obtain weta release authority
- Investigate gecko and skink releases
- Develop robin monitoring plan



# PEST MANAGEMENT

This year the pest team has carried on refining its trapping and monitoring systems to ensure Kaipupu Point remains as pest free as possible. The volunteer database has been streamlined using software such as Wild Apricot. This allows better communication with our volunteers as well as ensuring new volunteers receive up to date membership, roster and safety information. Refined use of our catch results, through software Catch IT, by creating graphs and location heatmaps, allows us to pinpoint common areas of predator incursion, helps to better understand predator behaviour and consequently increase our ability to control pests.

New technology is also being used, shown by the presence of Goodnature resetting traps, which have been installed this year. They have long acting lures and work by using gas to reset the trap after each predator catch. Servicing is once a month and helps lessen the volunteer load. Newly created lures are also being tested in our DOC200 traps to ensure our bait is as effective and enticing to predators as possible.

Other technology such as infrared cameras help us identify what predator maybe trying to enter

the Sanctuary and we then can protect against them before they have the chance.

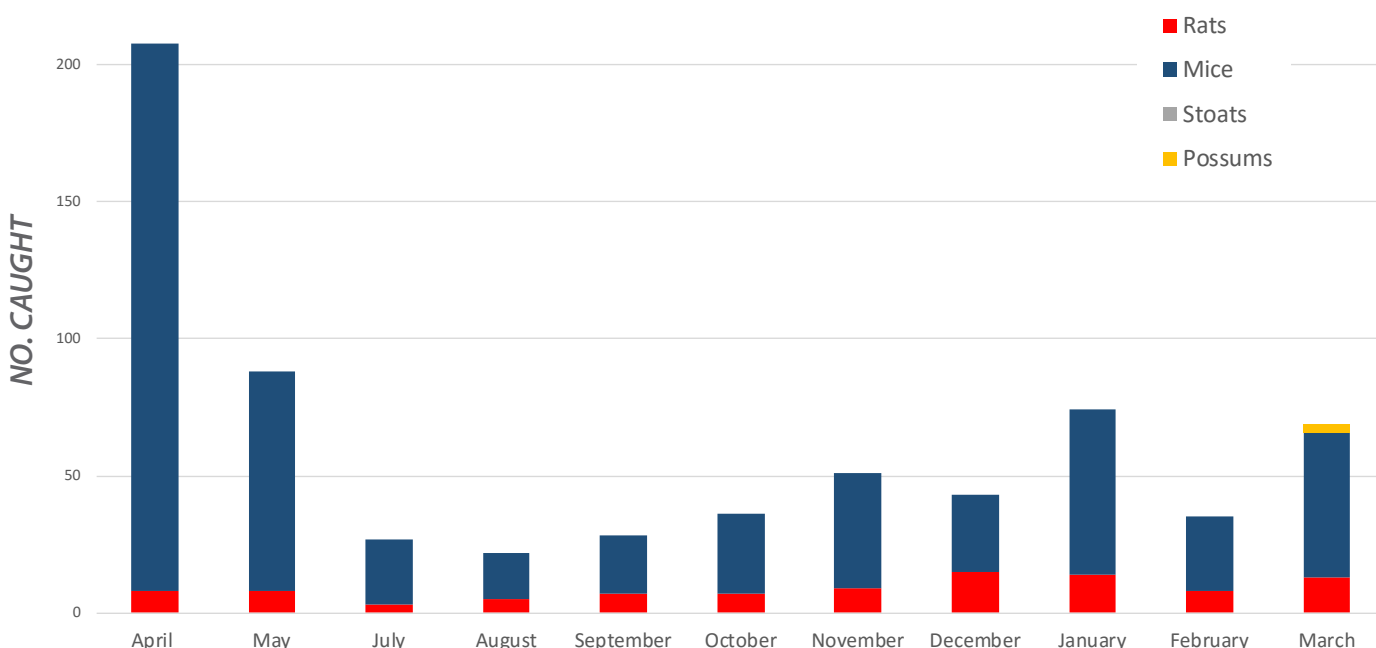
We continue, along with the track maintenance team and the great work from the Woodbourne airforce recruits, to make our monitoring tracks more user friendly and ensure that the whole of Kaipupu Point is trapped well.

The pinnacle moment for Kaipupu and the pest team has been the introduction of Rowi to the sanctuary. This underlines the hard work that has, and will continue to be done, to keep Kaipupu as pest free as possible. The kiwi creche has also allowed our volunteers a little bit of fun, learning how to find kiwi transmitter signals using special telemetry gear.

Thank you to all our pest team volunteers for your dedication and determination in the past year. We couldn't do it without you.

## 2016/17 ANNUAL WORK PLAN

- Complete contour track cutting and benching
- Continue to refine trap and lure use
- Optimise trap maintenance and servicing
- Consolidate track marking and ease of use of monitoring tracks



# EDUCATION

Conservation based education plays a vital role in engaging and inspiring our community to take action on the Sanctuary but also in their own backyard. Our education programme includes school and group visits, a lecture series developed in conjunction with Forest and Bird and our information site based in Mariners Mall. In 2015/16 we also became DOC concessionaires which allows us to provide guided tours of the Sanctuary.

Our Autumn and Spring plant sales provide an opportunity to educate our community about the importance of the 'Good Neighbours' halo and their own backyard biodiversity.

## SCHOOL VISITS

Our school education programme is focused on getting children actively involved in their environment and provides a hands-on experience that engages all their senses.

Our volunteer educator, Andrew John, spends half a day at Picton School every week and also leads school visits to the Sanctuary. In 2015/16, nine school groups visited the Sanctuary with Andrew. Special areas are being developed for school groups to plant with native trees.

## COMMUNITY INVOLVEMENT

In 2015, we successfully became DOC concessionaires with the aim of providing guided tours of the Sanctuary. We aim to have a team



of guides who will be fully trained and available to provide informative and educational guided tours of the Sanctuary.

## EVENING SPEAKER SERIES

The 2015/16 Speaker Series has included talks on a variety of topics:

- Nicky Eade from Marlborough District Council talking about biodiversity protection work in the Marlborough region
- Biz Bell from Wildlife Management International talking about monitoring Hamilton's frogs
- Duncan Kay from Zero Invasive Predators
- Nick Fox talking about 'Building Ecosystems' and his work with raptors.
- Claudia Mischler and her work on Black-billed gulls

## 2016/17 ANNUAL WORK PLAN

- Develop education activity sheets
- Develop defined childrens planting area
- Plan full lecture series in association with Forest and Bird
- Ensure support for Good Neighbours halo continues
- Develop QCC partnership programme



# MAINTENANCE & DEVELOPMENT

All projected improvements and maintenance for the year have been met and within the estimated budget. The team that includes Alan Izard, Vince Cowie, Paul Mann, Dave Nichols, Rob McPhail, Gerald Harper and numerous other volunteers have completed new projects including:

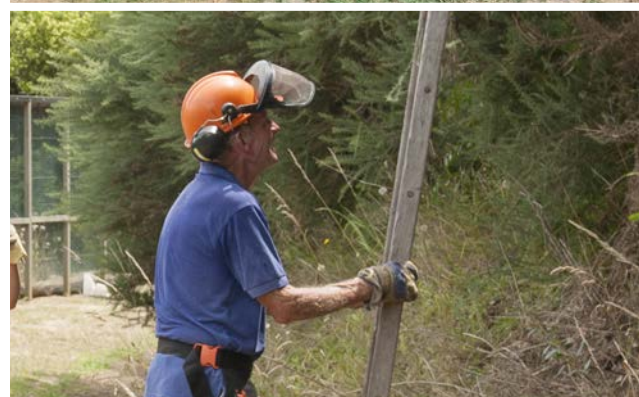
- A supplementary water storage system for birds
- Extended the height of fence around boatyard
- Installation and enlargement of steps to northern lookout
- Continuous work on weed control and pine eradication
- Track maintenance and the development of 'Q' track, to make access for pest management easier

During the course of the year we have had help from Outward Bound and a great days work from the Airforce recruits from Woodbourne who worked on the new 'Q' track and applied a coating of preservative oil to the jetty.

Very many thanks to all those who have helped throughout the year.

## 2016/17 ANNUAL WORK PLAN

- Complete benching and maintenance of all tracks
- Ongoing weed control
- Maintain clear Sounds views from main track, where appropriate
- Develop public track to summit from northern lookout
- Assist development of, and access to, the proposed schools planting area



# MARKETING & PROMOTION

To ensure Kaipupu Point Sanctuary remains financially viable, grows a 'high profile' in the local community, maximises effective communications and establishes effective working relationships with members, partners, sponsors and other stakeholders.

## EVENTS, PROMOTION AND PUBLICITY

Over the past 12 months high visibility in both print media and on the internet has helped to capture the hearts and minds of the local community along with the rest of New Zealand. Kaipupu Point is becoming increasingly well known for its passionate volunteers and vision to create an enduring sanctuary for our native wildlife, for all to share.

In addition a full calendar of fundraising events has kept us busy!

We are very grateful to all our sponsors, with particular thanks to our Rimu sponsors King Salmon, Bluebridge Strait Ferries and Mud House wine.

- 10 year celebration trip to the Sanctuary
- King Salmon fundraising lunch with Gibb's Restaurant (now Arbour Restaurant) - raised \$24,000
- Cawthron Environment Awards 'Landscape & Habitat Enhancement'
- Field Day trip with interested volunteer groups & DOC
- Finalist 'Green Ribbon Awards'
- Translocation of South Island Robin  
Community celebration at the Sanctuary with national television coverage on Seven Sharp
- Speaker Series monthly talks presented by pest management experts, wildlife photographers

and interesting trips taken by volunteers (Galapagos, Chatham Islands)

- Songs, Sounds & Salmon - winter tours to Kaipupu Point with King Salmon and Marlborough Tour Company
- Movie fundraiser evening  
'Hunt for the Wilderpeople' at Picton Cinemas  
'Blackfish' at Waikawa Boating Club
- Kiwi Blessing at Waikawa Marae followed by release onto Kaipupu Point
- Plant Sales with plants grown locally by Picton Men's Shed
- DOC Summer Explorer Tour
- Fundraising garage sale

## SOCIAL MEDIA

We have been busy building our social media followers through Facebook, Twitter and TripAdvisor.

The number of followers on Facebook has increased from 325 in April 2015, to 553 at the end of March 2016. Twitter has 154 followers.

## 2016/17 ANNUAL WORK PLAN

- Complete on-site signage
- Enhance information centre appeal
- Develop "Kaipupu Kids" club
- Explore the idea of a "Twilight tour"
- Gain two new sponsors
- Improve relationships with sponsors, businesses, transport operators, members and increase our Picton profile
- Review, develop saleable merchandise

# FINANCE & ADMINISTRATION

Kaipupu Point Mainland Island Society closely monitors expenditure, and has an experienced committee member who manages the finances. The accounts are handled by Peter Doig Accountants and are audited externally.

## **Retail**

Our information site premises moved from High Street to Mariners Mall in 2015. With extended opening hours and development of new merchandise including unique tshirts the information site is regularly visited by locals and visitors.

## **Fundraising**

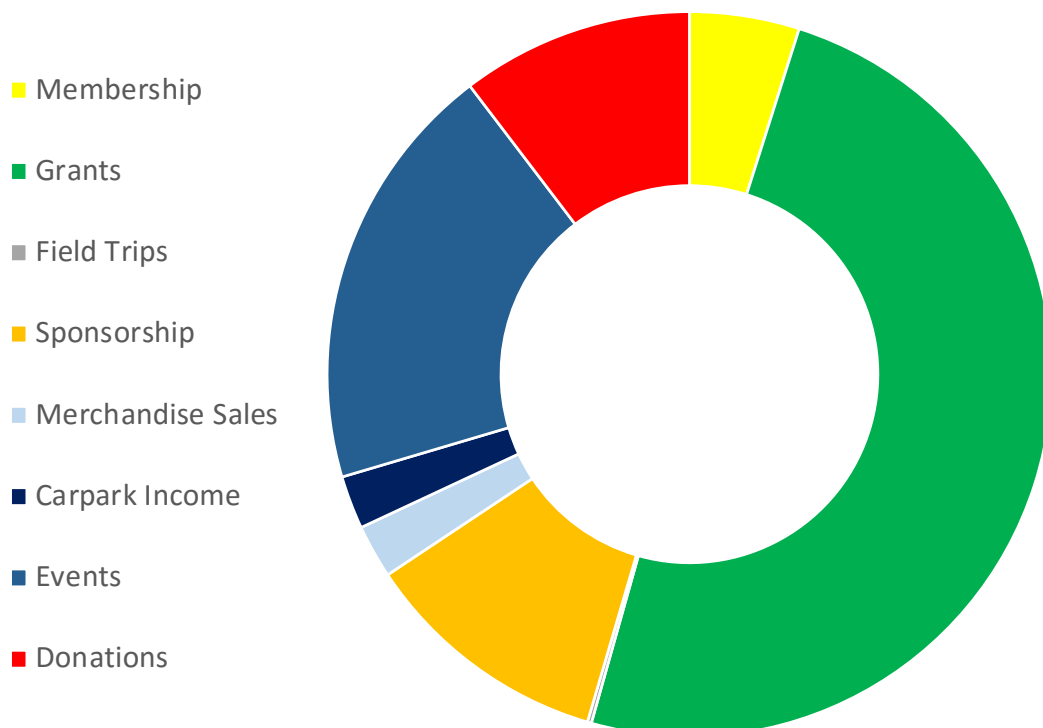
Income from sponsorship, grants and donations is vital to the success of our vision while allowing people help make a difference.

The Society received \$80,700 in grants and donations in 2015/16 and the joint fundraiser with Gibbs on Godfrey and Ora King raised \$24,000 for the Sanctuary. We wish to thank everyone who supported us this year.



## 2016/17 ANNUAL WORK PLAN

- Ensure compliance with approved concession process
- Plan for ongoing grant applications and improve grant paperwork
- Improve storage of key documents and policy coordination
- Maximise 'Wild Apricot' program
- Maximise Xero to improve banking and receipting process



## RELATIONSHIPS & PARTNERSHIPS

Partnerships are vital to Kaipupu Point Sounds Wildlife Sanctuary's success and during 2015 we worked with a number of partners including the Department of Conservation, Port Marlborough and our top sponsors Mud House, Bluebridge Strait Ferry and New Zealand King Salmon.

### **Department of Conservation**

DOC provides the Society with technical support, advice and knowledge essential for processes like the South Island robin and Rowi kiwi translocations. Through the DOC representative on the Societies committee we are able to maintain an excellent relationship.

### **Port Marlborough**

The support of Port Marlborough through in-kind donations, technical expertise and knowledge has continued this year. The Port Marlborough representative on the committee provides the necessary link between the Society and the Port.

### **Te Atiawa**

A strong relationship with local iwi Te Atiawa has been essential for developing protocols for species translocations.

### **'Good Neighbours' Halo Project**

Through our connection with Picton Men's Shed and Picton Dawn Chorus we are developing the 'Good Neighbours' halo project. We aim to improve community education and interest in conservation as well as engaging the community in developing their own backyard biodiversity through pest control and native plantings. The Autumn and Spring Plant sales promoting locally grown native plants have been very successful.

## SPONSORS

We are increasingly reliant on sponsors for financial income and actively encourage their involvement in key events throughout the year. These partnerships are cornerstone to our sustainability, along with helping to increase our



visibility with a wider audience. We look forward to working with additional partners in the coming year.

## MEMBERSHIP

At the end of the 2015/16 period, Kaipupu Point Mainland Island Society had 245 individual members, which includes 93 Life members. We continue to engage our members with our bi-monthly newsletter, social media and website. Member benefits include invitations to special events, discounted rates on events and merchandise and special deals from our sponsors.

Our AGM was held on the 21st of June 2015 where we presented the past years achievements. There was also an informative presentation by Dr Morgan Williams .

## OUR VOLUNTEERS

In 2015/16, our volunteers spent over 2000 hours working on a range of activities including pest control, monitoring, track maintenance, marketing, education, biodiversity, finances and management. This works out to be over \$60,000 in operational costs. As a volunteer organisation , it is only with this support that we can achieve our strategic goals and we are extremely grateful to all our volunteers for their continued support this year.

# THANK YOU TO OUR SUPPORTERS

We would like to recognise the contributions of the following:

## **Foundation Partners**

- Port Marlborough
- Department of Conservation

## **Rimu Sponsors**

- Mud House
- New Zealand King Salmon
- Bluebridge Cook Strait Ferry

## **Kahikatea Sponsors**

- Biosecurity New Zealand

## **Kohekohe Sponsors**

- Marlborough Machinery Repairs
- Wilderness Guides

## **Honorary Sponsors**

- Blacks Fasteners
- Le Cafe
- Crafar Crouch Construction Ltd
- Canon
- Beachcomber Cruises
- Norski
- The Seaport Scene
- Marlborough Computer Solutions
- Gregory Engineering
- Sounds Net



## **Other Supporters**

- Jordan Family Trust
- Te Atiawa
- Outward Bound
- Woodbourne Airforce Recruits
- Kenny Barging
- Le Cafe
- Picton ITM
- Nigel Hutchinson
- Robyn Spence
- Marlborough Helicopters
- Fulton Hogan
- Tory Channel Contracting
- Babel Scribe

## **Grants**

- Fresh Choice Community Fund
- MDC Community Fund
- Pub Charity
- Rata Foundation

## **Donations (over \$1000)**

- Nicky Wagner Environmental Trust
- Mabel Thorburn Charitable Trust
- Ranui Weed Trust
- Fauna Recovery Trust

***A very special mention to our volunteers and members.***







# APPENDIX I: FINANCIAL STATEMENTS

