



KAIPUPU WILDLIFE SANCTUARY

PICTON - MARLBOROUGH - NZ



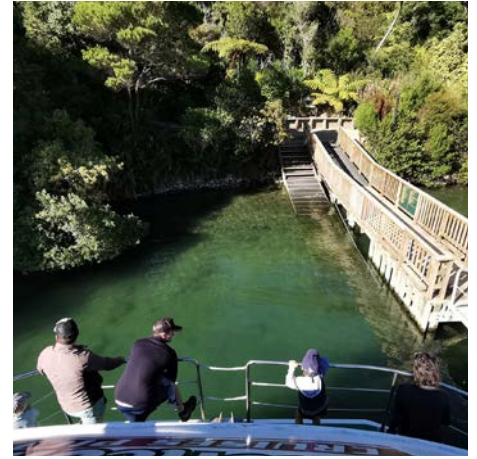
2018/19 ANNUAL REPORT

2018/19 HIGHLIGHTS



LIZARD SURVEY

A successful funding bid allowed KPMIS to hire contractors from EcoGecko to complete a comprehensive lizard survey of the Sanctuary. To gain a better picture of lizard populations across Picton we worked closely with Picton Dawn Chorus to expand the survey to the Wedge and Victoria Domain. Unfortunately, the hot summer weather and an increased fire risk meant that the area at Victoria Domain was not completed. The results of the survey at the Sanctuary confirm the presence of two species, the Raukawa gecko and Waiharakeke grass skink. In the future we hope to implement a monitoring programme of these species.



SUMMER EXPLORING & EASTER TREASURE HUNTS

Beachcomber Cruises provided increased opportunities to visit the Sanctuary over summer 2018/19 and the huge uptake allowed more people to explore the Sanctuary during the holiday period and beyond. Our inaugural Easter hunt was also well supported with over 120 people attending. The cruise to the Sanctuary was provided by Beachcomber Cruises and the kids were kept entertained with a treasure hunt and special Easter treat to finish.



MARLBOROUGH TOUR COMPANY & CRUISE FOR CONSERVATION

Marlborough Tour Company have been involved with Kaipupu Wildlife Sanctuary for several years, so it was with great pleasure that they came on board as Rimu Sponsor's earlier this year. As part of their sponsorship we held the well-attended 'Cruise for Conservation'. This trip allowed guests to enjoy the beauty of the Marlborough Sounds and provided us with an opportunity to say thank you to some of our other treasured supporters.



SUPERSTAR SUPPORTERS

Our ongoing relationship with Rata Foundation has been strengthened further this year with both our coordinators now partly funded for three years. We are also excited to welcome new or returning sponsors, Marlborough Tour Company and EcoWorld Aquarium. Long term sponsor New Zealand King Salmon also increased their sponsorship this year and we hope to apply this extra funding to our education programme.



NEW SHOP LOCATION

Finding ways to help the environment has never been easier thanks to the collaboration of Kaipupu Wildlife Sanctuary, Envirohub Marlborough and Picton Dawn Chorus. Sponsorship from long-time supporters Port Marlborough and funding from Marlborough District Council has delivered a retail and office space where the local community and visitors are able to engage with our work as well as attend events and talks.

**OUR MISSION IS TO ENRICH
THE COMMUNITY THROUGH
THE RESTORATION AND
GUARDIANSHIP OF KAIPUPU
WILDLIFE SANCTUARY, WHERE
NATIVE FLORA AND FAUNA
THRIVE IN A PEST FREE
ENVIRONMENT, THAT CAN BE
APPRECIATED BY ALL.**



BIODIVERSITY

To develop a self-sustaining ecosystem through the removal of pest species, reintroduction of appropriate species, native plantings and allowing natural regeneration to create a coastal forest ecosystem that is representative of one prior to human arrival.

ENGAGING EDUCATIONAL EXPERIENCES

To engage and inspire the whole community (preschool to adult) through a hands-on conservation experience.
To increase conservation knowledge within a framework of science and research, encourage a connection with nature and promote application of ecological knowledge

EFFECTIVE PROCESSES & SUSTAINABILITY

To ensure efficient and effective management of Kaipupu Wildlife Sanctuary through well managed finances, effective administration processes and by maintaining a safe environment for volunteers and visitors.

PRODUCTIVE PARTNERSHIPS

To create productive and supportive relationships with our sponsors, volunteers, local community, iwi and other conservation groups.

OUR COMMITTEE



GERALD HARPER
CHAIRPERSON



MELISSA KELLIE
TREASURER



NICKY JENKINS
SECRETARY



ANDREW JOHN
EDUCATION

Kaipupu Point Mainland Island Society was established in 2006 and is a registered charitable entity. The role of the Society is to oversee management of Kaipupu Wildlife Sanctuary. Comprised solely of volunteers the management committee works with Kaipupu Point landowners, Port Marlborough and the Department of Conservation. A representative from each organisation sits on the management committee. The Society contracts two coordinators to complete biodiversity, education, maintenance, marketing, finance and administration tasks.



DAN PALMER
BIODIVERSITY



JAMES WILSON
PREDATOR CONTROL



JUDITH MANNING
FLORA & WEED CONTROL



ROBIN COX



ALAN IZARD
MAINTENANCE TEAM LEADER



RACHEL RUSSELL
PROJECT COORDINATOR



TRUDY NICHOLAS
PREDATOR CONTROL COORDINATOR



WENDY SULLIVAN
DOC REPRESENTATIVE



ROSE PRENDEVILLE
PMNZ REPRESENTATIVE



CHAIRPERSONS REPORT

As the Chairman of Kaipupu Point Mainland Island Society I think I sometimes have the easy job ---- that is to report on all the hard work of others.

I know many of you have heard what I am about to say before, but it needs repeating at every opportunity, that is Kaipupu is very fortunate to employ two co-ordinators of the calibre of Rachel and Trudy. Rachel whose official title is project co-ordinator which really means what ever you wont done give the job to Rachel. The results will be amazing, and everything is done with a laugh and good humour, whether it be designing a new brochure, applying for our endless funding requirements and sorting all our committee requirements as well as thinking up new ways that Kaipupu might become financially independent. Every organization needs a Rachel.

Trudy who is in charge of all our trapping, monitoring and organizing our volunteers out on the sanctuary. She has had a very busy year as we bring our trapping and monitoring program up to “best practice”, which has meant a lot of extra work for her. Trudy manages to organize our volunteers in such a way that they all keep coming back for more, no mean feat. At times it must seem like herding cats. I know some people volunteer out of their passion for the environment, but a large proportion of our volunteers turn up out of respect that they have for Trudy. Thank-you both for your considerable contributions to making Kaipupu the successful organization it is today.

As you can see from our annual report, we have had another busy year with many projects and goals achieved. I will touch on a few of them in my report.

The most obvious change has been the opening of the new shop at 14 Auckland Street. We now have a permanent site along with Picton Dawn Chorus and Envirohub Marlborough. I must acknowledge at this point the generosity of Port Marlborough with supplying us with a rent-free premise and our Port company representative on our committee Rose Prendeville who certainly went the extra mile to achieve this desirable outcome. I hope she can now look back with considerable satisfaction at the way this project has all come together for the benefit of the whole community. Also, it’s worth mentioning here that once this project got the green light, there was a huge amount of work to do to get the shop open which Rachel spearheaded with all her skills and enthusiasm. Well done to all those involved, a very worthwhile outcome was achieved.

Out on the Sanctuary a lizard survey was completed, large parts of the main track were shingled and a track counter has been installed. The trapping operation is in the last push to reach best practice with new tracks cut and new trap housings being built. A walk around the Sanctuary does not reveal the vast amount of work that is or has been going on to achieve our goal of making Kaipupu such a great place to visit. It is very easy to gloss over this work, but it involves considerable volunteer hours and sponsorship and the invaluable support in kind from local businesses. Extra volunteer labour has come from such varied groups as Girl Guides, Junior Doctors Group, Outward Bound, Kono Wine, and RNZAF Woodbourne Recruits.



Special mention needs to be made here of the amazing contribution Alan Izard makes to keeping the main track and surrounds in pristine condition and he seems to land the job of over-seeing these groups and keeping them focused on the task in hand. Also, I am pleased to acknowledge the work of committee member Judith Manning is doing in co-ordinating a group of volunteers in a weed control program on the sanctuary, quite a daunting job.

A very special achievement this year was Kaipupu's winning of the Community Innovation section of the Cawthorn Marlborough Environment Awards. This was all about Andrew John and the work he does with school children in Marlborough. If anyone deserves recognition for all the work, they do it is Andrew. So, it is very satisfying to see him being acknowledge for his considerable contribution he makes to our education program.

I would like to thank our committee for the work they do as a group to the successful running of Kaipupu. As a group we bring many and varied skills to the table, but all this seems to gel together in a very harmonious and positive way. A big thank-you to you all for your on going contributions that help to make Kaipupu the success it is today.

To our sponsors, Rata Foundation for believing in us.

Rimu sponsors NZ King Salmon for doubling their contribution, Bluebridge Ferry, Mudhouse Wines, our new Rimu member Marlborough Tour Company.

Kohekohe sponsors Marlborough Gold Honey,

Wilderness Guides and new sponsors Core Advice and EcoWorld Aquarium. A huge thank-you for your generosity. There is also a large list of other sponsors and supporter as can be seen in the annual report without your help Kaipupu would struggle in fact we would not achieve what we do so thank-you for your ongoing support.

Now to acknowledge the heart and soul of our organization our wonderful volunteers and members. The other day one of our volunteers apologised for only being able to do monitoring once a month but that is not the point. We all contribute what we can, and it is our combined contributions that make the difference and collectively they add up to our very successful community run project. Remember it is the sum of many parts that makes the whole operation work. So no matter what your contribution it is hugely appreciated and a most sincere thank-you for all your efforts. To one and all who contribute to making Kaipupu Mainland Island Society so successful a very heart felt thank-you.

Gerald Harper

BIODIVERSITY

To develop a self-sustaining ecosystem through the removal of pest species, reintroduction of appropriate species, native plantings and allowing natural regeneration to create a coastal forest ecosystem that is representative of one prior to human arrival

Eradicate mustelids, possums and cats; control rats to 5% tracking tunnel indices and control mice to 10% tracking tunnel indices and maintain it through effective monitoring and trapping based on best scientific practice.

Eradicate wilding pine and sycamore, and control other weed species to low levels. Maintain it through effective monitoring.

Enhance and celebrate the native flora and fauna already present at Kaipupu Wildlife Sanctuary

Over the last twelve months many of the recommendations from the 2018 predator control review have been implemented. The workload of our volunteers doubled over winter 2018 but this has resulted in a trapping network that should be much more effective. We have also had the opportunity to discuss the Sanctuary with DOC's Island Eradication Advisory Group (IEAG) who have provided several ideas to further improve our predator control programme.

Our weed control programme has been extended with the addition of a small team of volunteers who have been tackling the weeds on or near monitoring tracks across the Sanctuary. This work was supported by a return visit from Ben Minehan and his team at Weed Solutions who continued the work they started in 2018.

Over the last year our aim was to gain a better understanding of the native flora and fauna already present at the Sanctuary. Considerable time has been spent surveying the vegetation across the Sanctuary by a dedicated team member and our annual photo point vegetation survey along the main track continues to highlight the changes over time. The lizard survey completed in early 2019, identified the presence of one gecko and one skink species. In the future these species will be monitored in response to pest eradication and habitat restoration. Anecdotally, more weta are taking up residence in our artificial refuges or 'weta hotels' and Little Blue Penguins are also more common on the Sanctuary each year.

MOVING FORWARD


Monitoring tunnels will be placed at the Sanctuary in late 2019 and tracking cards will be deployed four times annually. Tracking rates will be used to inform predator control and translocation decisions into the future. Our short-term goal is to see decreased

tracking rates over time. We are also working with Picton Dawn Chorus and Port Marlborough to strengthen the 'front line' outside the fence. This trap line is being monitored by Port Marlborough staff.

Weed control will continue across the

main monitoring tracks and funding will be sought to employ a contractor to remove larger species and those in more difficult areas.

A weta monitoring programme will be established; Identify seed sources for future collection and replanting



Complete successful translocations and reintroduction of species

Collaborate and exchange knowledge with the local community and other organisations

Provide effective management of Kaipupu Wildlife Sanctuary

This year we have focussed on ensuring our trapping programme is more effective and determining which species are already present at the Sanctuary. Future translocations will be dictated by the success of our predator control.

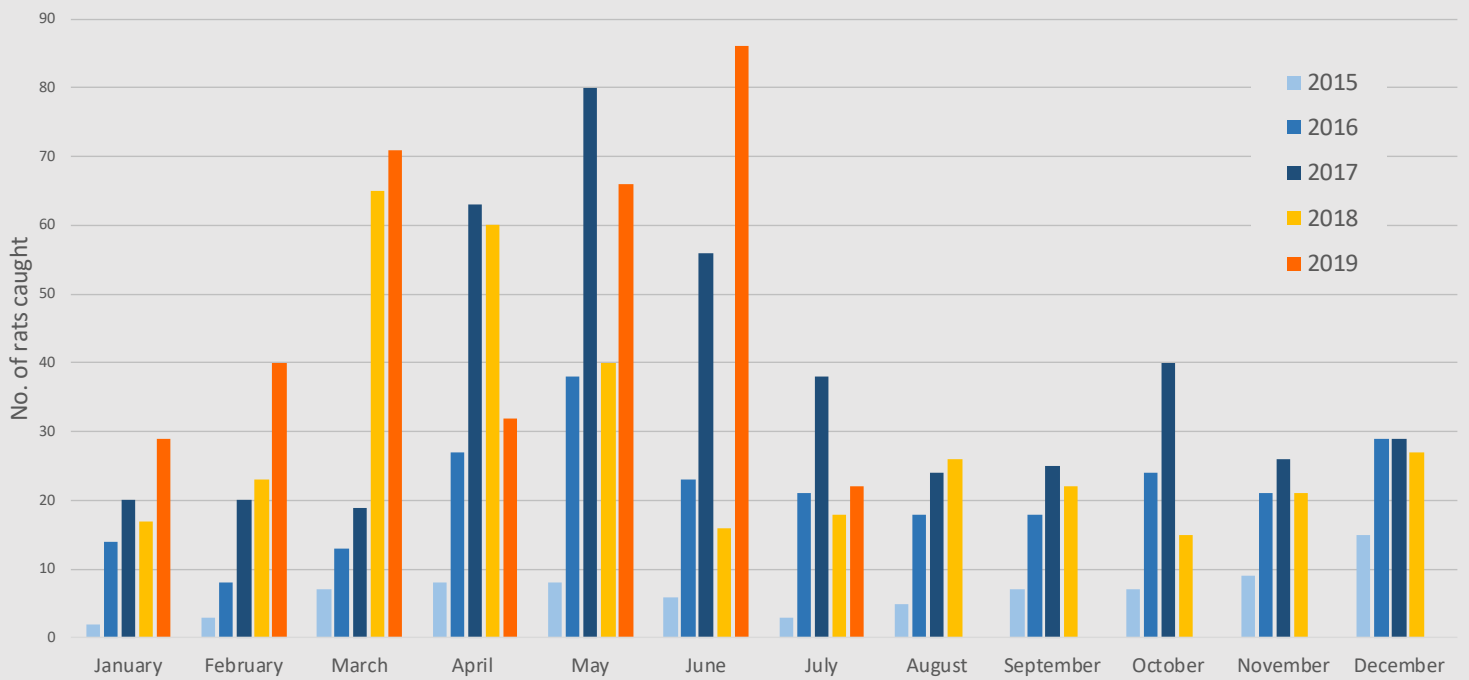
Our move into shared premises with Picton Dawn Chorus and Envirohub Marlborough has established a stronger collaborative relationship. The joint lizard survey project between Picton Dawn Chorus and Kaipupu Wildlife Sanctuary allowed for resource and information sharing which benefited both groups. Members of the Kaipupu team are part of the steering group helping to develop the Marlborough Biodiversity Forum. The overarching theme of the forum is "Working together as a community to enhance the mauri of Marlborough's indigenous biodiversity".

Our new biodiversity plan outlines the Sanctuary's goals for the next few years and regular reviews will ensure that it stays up to date with current tools and research. Planning is underway for a strategic review and update. Our aim is to collect the thoughts of all those involved with the Sanctuary as well as our local community to enable informed discussion.

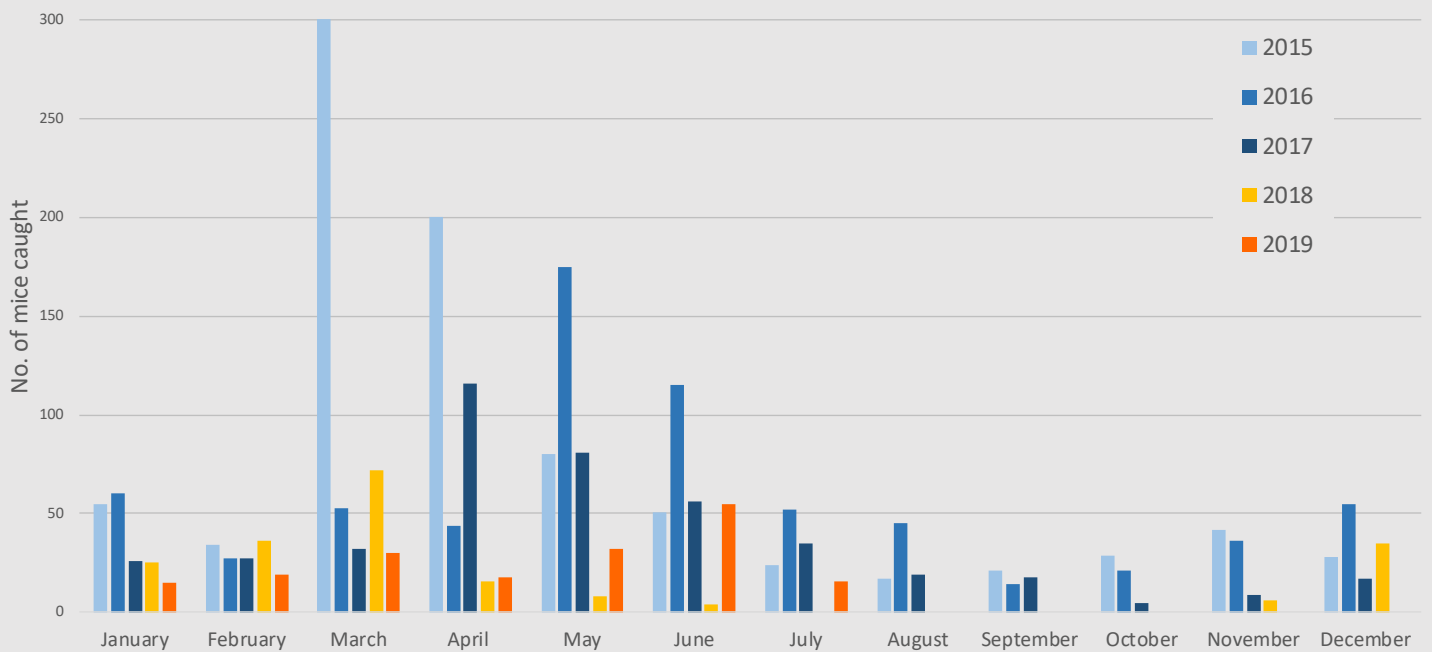
programme. We plan to meet with experts from the Department of Conservation to determine the requirements for future translocations and how we can ensure the success of these translocations. In the future we would like to work

together with Picton Dawn Chorus and Envirohub Marlborough on new projects which engage or educate our community. We are also looking forward to the connections that will grow from the Marlborough Biodiversity Forum.

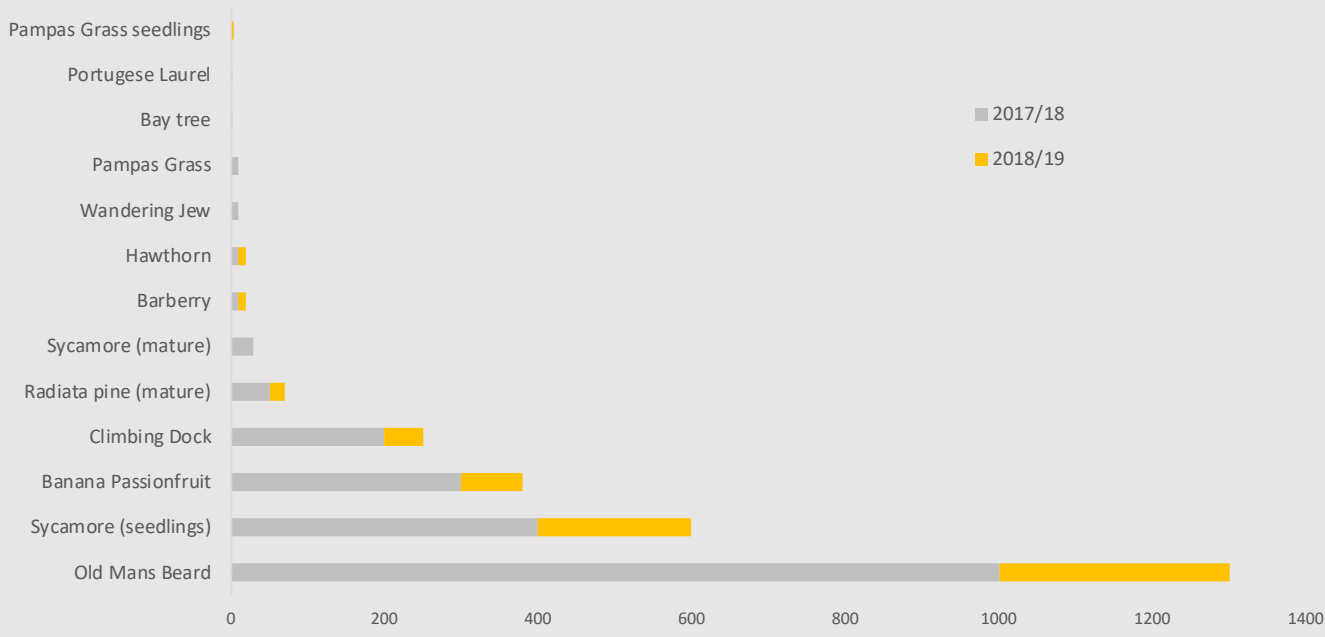
Later this year we are planning a strategic review of all our programmes and we are currently seeking feedback from our members, volunteers, supporters and the local community to inform future projects at Kaipupu Wildlife Sanctuary.



ABOVE: Rat catch numbers fluctuate over the year, with peaks typically occurring in autumn. This year, with a nationwide mast we have seen the highest catch rates in five years.



ABOVE: While targeting mice in other areas is seen as too difficult we continue to traps these small rodents. Our catch numbers remain relatively steady and with the implementation of double ended mouse traps we hope to see a decreasing presence over time.

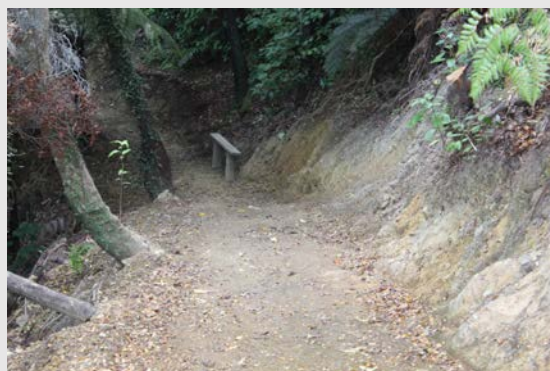


ABOVE: After two years of weed control by an external contractor thousands of weeds have been removed from the Sanctuary. This work is being supported by our volunteer team who are continuing to remove weeds from the main monitoring tracks.

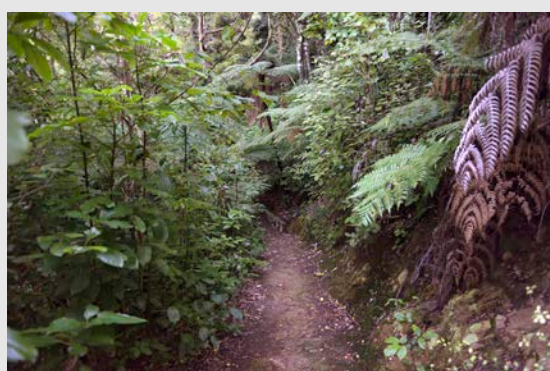
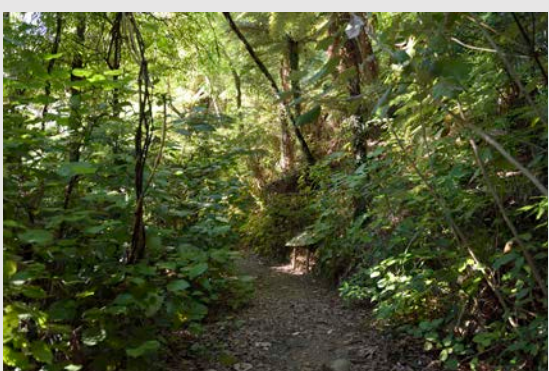
SITE THREE

SITE ELEVEN

2013



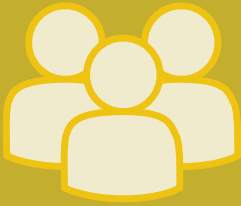
2019



ABOVE: Examples of the incredible changes in the vegetation at Kaipupu Wildlife Sanctuary, tracked via an annual photo point vegetation survey.

1135

STUDENTS ON
EDUCATIONAL
VISITS



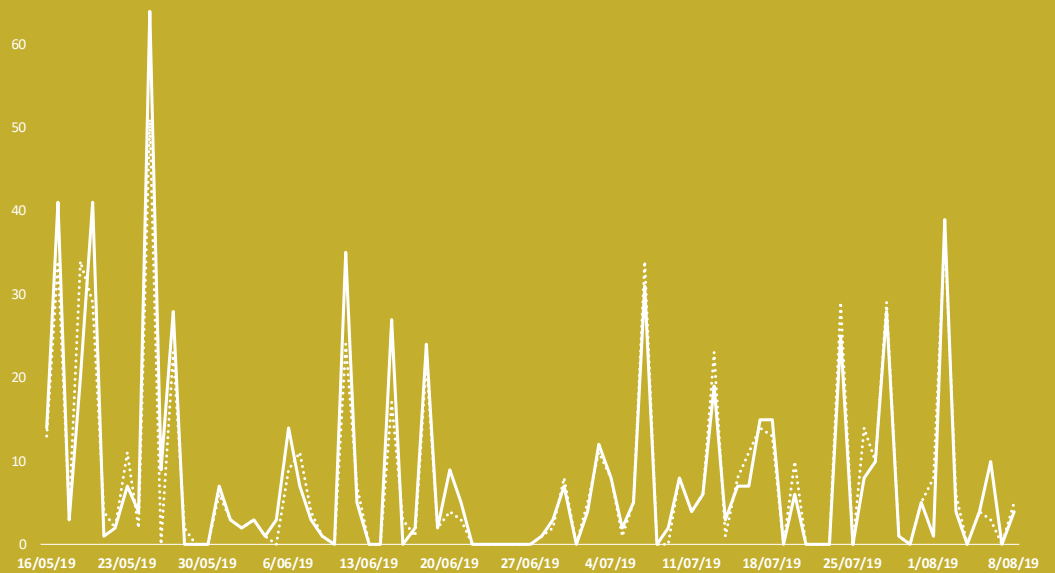
231

Members

125

Volunteers

TRACK COUNTER INSTALLED MAY 2019



Four Rimu sponsors: Bluebridge Cook Strait Ferry, Marlborough Tour Company, Mud House and New Zealand King Salmon
 Four Kohekohe sponsors: Core Advice, EcoWorld Aquarium, Wilderness Guides and Marlborough Gold Honey

“ A peaceful oasis - a lovely way to wile away a couple of hours or so – we had the place to ourselves so felt marooned ”



GECKO SPECIES / SKINK SPECIES

3670 HOURS
SPENT ON PREDATOR CONTROL

1215 VISITORS
ON
GUIDED
TOURS

EDUCATION

To engage and inspire the whole community (preschool to adult) through a hands-on conservation experience. To increase conservation knowledge within a framework of science and research, encourage a connection with nature and promote application of ecological knowledge.

Provide hands-on inspirational school visits for all students in Marlborough

Engaging group visits and guided tours

Inspired and informed community

Approximately 1,100 students from across Marlborough experienced Kaipupu Wildlife Sanctuary with our educator Andrew John this year. These visits were preceded by a classroom visit featuring our taxidermied animals and the senior class at Picton School enjoyed weekly classroom visits as part of their ongoing connection with the Sanctuary.

This year our education programme was awarded the Community Innovation award at the Cawthorn Marlborough Environment Awards. We continue to be a part of the Community Educators group who met annually to upskill and discuss our various education programmes.

Our sub licence application was successful this year, allowing a number of local tour operators to provide guided tours under our concession. These tours have seen 1200 people visit the Sanctuary as part of a guided tour.

A new event for this year, the Easter treasure hunt was popular with families, approximately 120 people visited the Sanctuary over two trips.

Our bimonthly newsletters are filled with interesting information and are well received by nearly 300 members, volunteers and supporters.

Our retail shop/office at 14 Auckland Street was officially opened to the public in April 2019. The shared premises with Picton Dawn Chorus and Envirohub Marlborough are open five days a week. We are seeing regular visitors (locals and tourists alike) as well as school groups who visit prior to field trips at the Sanctuary. As part of the DOC Summer Explorer Programme we held a joint "Be a pest detective" event with Picton Dawn Chorus. Children joined us to learn about introduced predators and build their own tracking tunnels to track creatures in their own backyards.

MOVING FORWARD WE AIM TO:

- Continue to engage with more Marlborough Schools
- Diversify our topics and link in with school learning/unit standards.
- Improve our connection with Queen Charlotte College
- Develop a scholarship programme to allow more schools to visit the Sanctuary
- Investigate the idea of a nursery and replanting programme
- Expand our education programme to include Shakespeare Bay
- Develop guided tours that are engaging and profitable for the Sanctuary

EFFECTIVE PROCESSES & SUSTAINABILITY

To ensure efficient and effective management of Kaipupu Wildlife Sanctuary through well managed finances, effective administration processes and by maintaining a safe environment for volunteers and visitors.

Capture the hearts and minds of the local community and visitors to the region while growing the financial and volunteer support required to meet the biodiversity and educational goals.

We continue to promote the Sanctuary online via our website and social media, with our facebook page now being followed by over 1200 people. Tripadvisor also provides an opportunity for visitors to review us.

MOVING FORWARD

We plan to increase promotion of the Sanctuary by partnering with our sponsors. An example of this is building on our current relationship with Bluebridge Cook Strait Ferries who are able to engage with national and international visitors.

Ensure financial stability

Grants continue to provide financial support for a range of projects at the Sanctuary. A three year commitment from Rata Foundation for coordinator costs has been a huge success this year. Increased sponsorship from NZ King Salmon and new sponsorship from Marlborough Tour Company, Core Advice and EcoWorld Aquarium also provide more financial stability.

Increased visitor numbers

Through their sponsorship Marlborough Tour Company supported our fundraising event, Cruise for Conservation which will take place annually.

We are now tracking visitor numbers using a track counter installed in May 2019. This information will provide valuable insight.

Maintain standard operating procedures which reflect best practice in a voluntary organisation and are consistent with our constitution.

Planning is underway for a strategic review. We are in the process of surveying our community, members, volunteers and supporters to gather their thoughts on a range of topics including future projects at Kaipupu Wildlife Sanctuary.

As part of our strategic review we hope to introduce new ideas to create revenue for the Sanctuary. Ideas include:

Ensure that Kaipupu Wildlife Sanctuary develops and functions in a safe & ecologically sound way to maximise visitor experience

We continue to monitor and assess the safety of our volunteers and visitors at the Sanctuary. The main walking track was upgraded with a surface of gravel. We are also in the process of replacing ropes used by volunteers. Volunteers are now also completing Port User Inductions.

Increasing the number of Kaipupu led guided tours

Introducing new ways to experience the Sanctuary eg. photography or artist workshops, plant tours, dinner tours

FINANCIAL STATEMENTS

KAIPUPU POINT MAINLAND ISLAND SOCIETY - FINANCIAL STATEMENTS FOR THE YEAR ENDING 31ST MARCH 2019

INCOME	31 March 2019	31 March 2018	
Carpark Income	4,800	4,000	↑ 20%
Donations - General	3,168	4,064	↓ 22%
Donations- KPP Island Box	1,225	1,245	↓ 1.6%
Donations - Other	13,033	19,760	↓ 34%
Fundraiser Event Proceeds	4,856	345	↑ 1307%
Grants	64,302	39,788	↑ 62%
Guided tours	1,535	557	↑ 175%
Interest Income	125	139	↓ 10%
KPP Island Concessions	510	610	↓ 16%
Other Income	612		↑
Sale of Merchandise	1,676	2,692	↓ 38%
Sponsorship	27,417	16,000	↑ 71%
Subscriptions Income	2,435	3,092	↓ 21%
Total Income	125,695	92,292	
LESS OPERATING EXPENSES			
Accounting & Audit Fees	1,670	1,095	↑ 53%
Bank Fees	40	45	↓ 11%
Biodiversity	8,144		↑
Catering (Meetings)	617	221	↑ 179%
Computer Expenses	1,102	1159	↓ 5%
Donations		35	↓ 100
Education Expenses	3,310		↑
Fund raiser Costs	157	539	↓ 71%
General/Office Expenses	318	185	↑ 72%
Guide Costs	250		↑
Insurance	1,280	1,280	NC
Licences/Registrations & Compliance	860	250	↑ 244%
Light, Power, Heating	658	930	↓ 29%
Marketing & Communications	2,358	2,301	↑ 2.5%
Merchandise	536	1,644	↓ 67%
Pest Management Co-ordinator	27,350	24,650	↑ 11%
Pest/Plant Management	22,750	18,863	↑ 21%
Printing, Postage & Stationery	187	94	↑ 99%
Project Coordinator	35,925	31,815	↑ 13%
Repairs and Maintenance	2,672	349	↑ 666%
Shop- Expenses	414		↑
Shop- Rent	5,667		↑
Telephone & Internet	734	748	↓ 1.8%
Total Operating Expenses	117,000	86,203	
NET PROFIT	8,995	6,089	
Depreciation	23,608	23,735	
NET PROFIT AFTER DEPRECIATION	(14,913)	(17,645)	↑ 15%

THANK YOU TO ALL OUR SUPPORTERS

FOUNDATION PARTNERS

Port Marlborough
Department of Conservation

GRANTING AGENCIES

Rata Foundation
Pub Charity
MDC Community Fund
Weedbusters Grant
Lion Foundation
Freshchoice Community Fund
Pelorus Trust

RIMU SPONSORS

Bluebridge Cook Strait Ferry
Marlborough Tour Company
Mud House
New Zealand King Salmon

KOHEKOHE SPONSORS

Core Advice
EcoWorld Aquarium
Marlborough Gold Honey
Wilderness Guides

HONORARY SPONSORS

Beachcomber Cruises
Blacks Fasteners
Crafar Crouch Construction
Gregory Engineering
Le Cafe
Marl. Computer Solutions
Norski
Sounds Net
TST Contracting

DONATIONS (> \$1K)

Picton Lions Club
Laurie Forestry Services
James Sharon Watson
Conservation Trust
Picton Freezing Works Reunion
PowerHouse Reserve Herb and
Native Tree Nursery
Marlborough District Council
Thorburn Family Trust

OTHER SUPPORTERS

Jordan Family Trust
Te Atiawa
Outward Bound
Woodbourne Airforce Recruits
Kenny Barging
Picton ITM
Nigel Hutchinson
Robyn Spence
Marlborough Helicopters
Fulton Hogan
Tory Channel Contracting
Scenic Hotel Marlborough
The Paper Rain Project
Jonathan Duffy
Bunnings
Webster Place Quarry
Crafar Crouch
Bully Construction
Kono Wine

**A VERY SPECIAL MENTION TO ALL OUR
VOLUNTEERS & MEMBERS**